



 **Product**  
**Catalogue**



 [www.cutlasersystem.com](http://www.cutlasersystem.com)



<b>About us</b>	<b>01</b>
<b>Industrial washing baskets</b>	<b>03</b>
<b>Polypropylene tanks</b>	<b>05</b>
<b>Modular metal structures</b>	<b>07</b>
<b>CNC machined parts</b>	<b>10</b>
<b>Material handling trolleys</b>	<b>11</b>

*From laser cutting to 3D prototyping, we bring the entire metal fabrication chain together under one roof – for precise parts, delivered fast, with no intermediaries.*

Founded in 2011, Cut Laser System is built on a team of professionals with more than 15 years of experience in the sector. Our mission is to support our clients in meeting their production challenges and to add value to their processes by manufacturing the required parts to the highest quality standards. Our vision is to become a leading company by delivering innovative solutions and providing our clients with fast, precise services through the most advanced technologies.

*Based in Bursa, Turkey, our company offers a broad range of services including laser cutting, bending, machining, welding and assembly, stainless steel washing basket manufacturing, as well as design, engineering and surface coating. With an environmentally responsible approach, a commitment to quality and a customer-focused service, we are proud to be your trusted industrial partner.*



# CLS - Cut Laser Systems

## About Us



*Cut Laser System is a metal fabrication workshop where modern technology meets human expertise. We turn our clients' drawings into tangible parts, precise and durable – from single prototypes to series production.*

Built on the conviction that precision and service are not incompatible with speed, Cut Laser System was founded around one simple idea: mastering every step of the manufacturing process to deliver consistent quality. Our mission: impeccable quality, short lead times and cost efficiency – in every cut, every bend, every weld.



***Two pillars that guide every decision, every project, every part that leaves our workshop.***

### ***Vision***

### ***A leading and innovative brand.***

Adapting to constantly evolving technologies to become a leading and innovative brand in the field of laser cutting and metalworking. With our customer-centric approach, we aim to be a globally recognised company delivering sustainable solutions.

### ***Mission***

### ***Innovative solutions and quality.***

Delivering innovative, high-quality solutions to the challenges our clients face in their production processes. With our commitment to precise, fast and reliable service, we contribute to our clients' efficiency while maintaining the highest standards in parts manufacturing.



01

**Our Baskets**  
Industrial washing baskets



Product Code CLS-2402

**Stainless steel transport basket**



Product Code CLS-2407

**Stainless steel transport basket**

# 01

## Our Baskets

Industrial washing baskets



Product Code CLS-2420

**Ultrasonic washing basket**



Product Code CLS-2531

**Transport basket**



Product Code CLS-2511

**Transport basket**



Product Code CLS-2409

**Stainless steel implant basket**

# 02 Our Tanks

Polypropylene tanks



Product Code CLS-2418  
**PP Rinsing Tank**



Product Code CLS-2419  
**PP Electropolishing Tank**



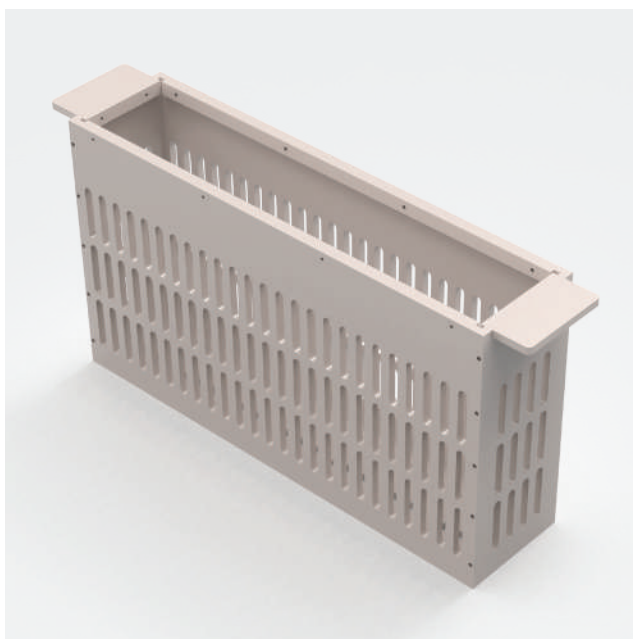
Product Code CLS-2418  
**PP Compact Rinsing Tank**



Product Code CLS-2409  
**PP Compact Immersion Tank**

# 02 Our Tanks

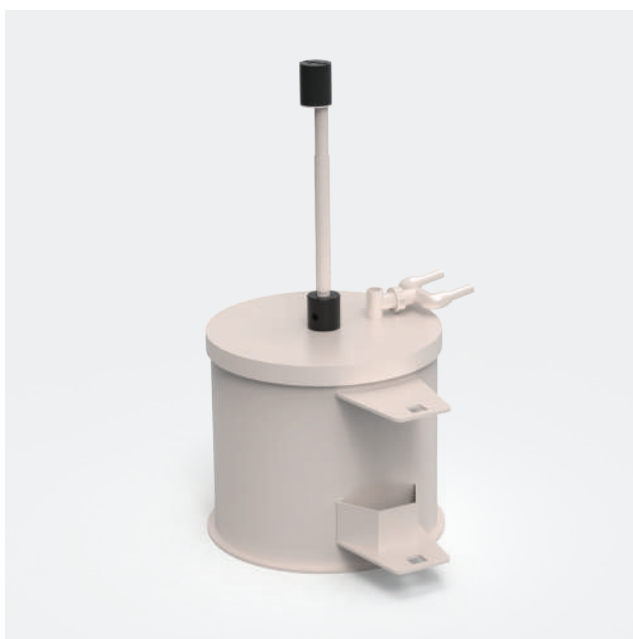
## Polypropylene tanks



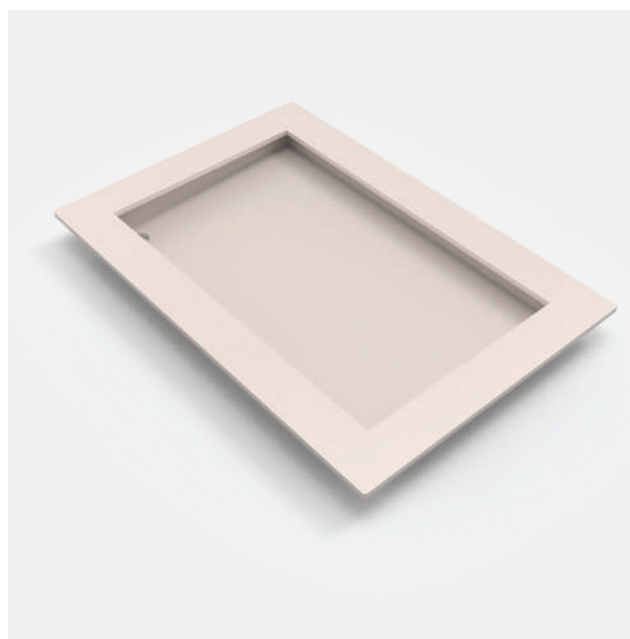
Product Code CLS-2418  
**PP Immersion Tank**



Product Code CLS-2537  
**PP Acid Tank with Lid**



Product Code CLS-2414  
**PP Microfiltration Tank**



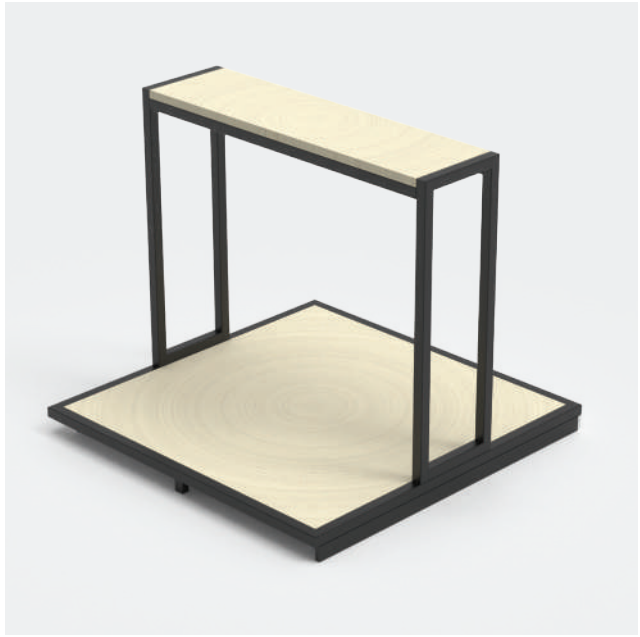
Product Code CLS-2415  
**PP Acid Wash Sink**

# 03 Desing, Cutting & Welding

Modular metal structures



Product Code CLS-2534  
**Metal-wood table**



Product Code CLS-2523A  
**Wheeled stand**



Product Code CLS-2523B  
**Adjustable stand**



Product Code CLS-2523C  
**Support TV**

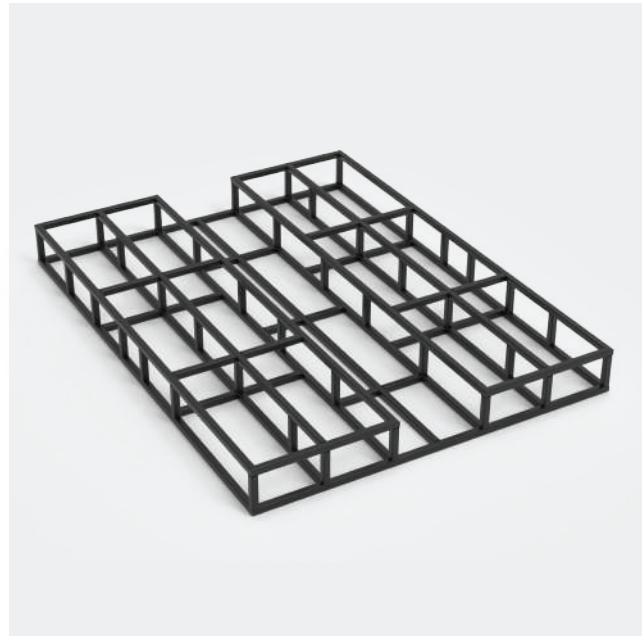
# 03 Desing, Cutting & Welding

Modular metal structures



Product Code CLS-2540

**Platform**



Product Code CLS-2405

**Machine chassis**



Product Code CLS-2510

**Machine outer casing**

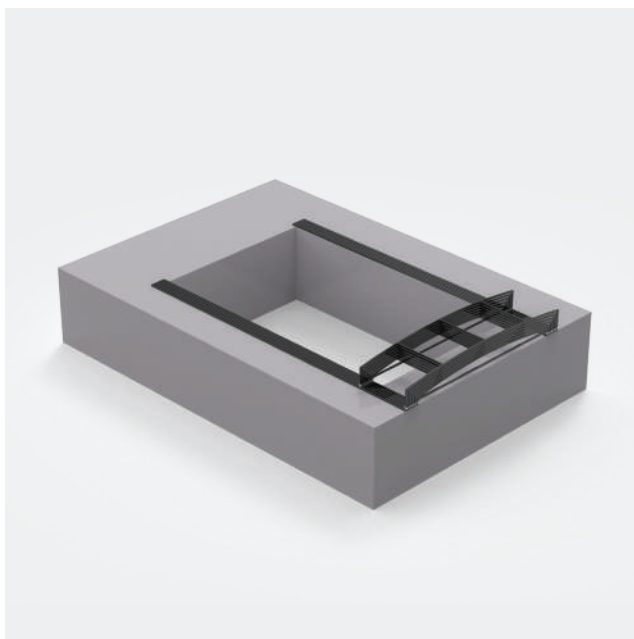


Product Code CLS-2411

**Conveyor line**

# 03 Desing, Cutting & Welding

Modular metal structures



Product Code CLS-2522  
**Sliding pool cover**



Product Code CLS-OWELDING  
**Welding table**



Product Code CLS-2605  
**Greenhouse & winter garden**

# 04 CNC Machining

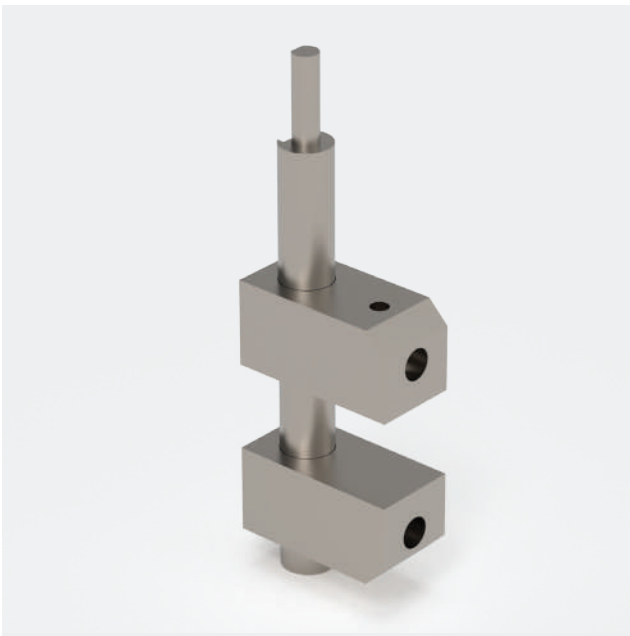
CNC machined parts



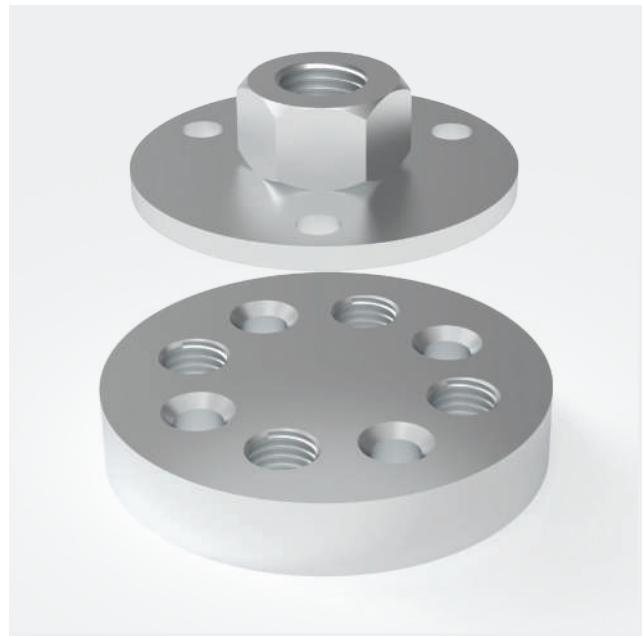
Product Code CLS-2416 A  
**Shaft**



Product Code CLS-2416 B  
**Shaft**



Product Code CLS-2611  
**Titanium bracket**



Product Code CLS-2406  
**Stainless steel shaft retaining rings**

# 05 Our Trolleys

Material handling trolleys



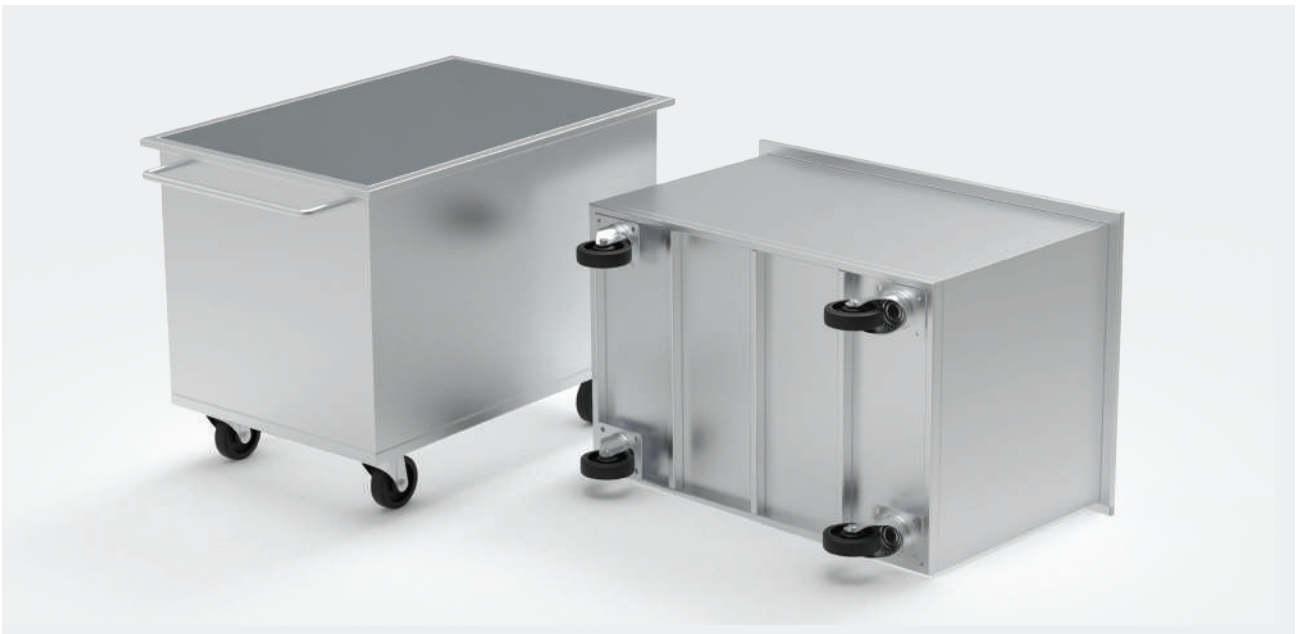
Product Code CLS-2528

**Stainless steel transport trolley**



Product Code CLS-KTA

**Mould transport trolley**



Product Code CLS-2604

**Stainless steel transport trolley**





**Contact Us**



+90 541 595 25 05



Veysel Karani Mahallesi  
3. Uludağ Sk. No:6  
Bursa · Turquie



info@cutlasersystem.com  
www.cutlasersystem.fr



+33 6 62 38 47 58



2 rue de la Fontaine  
70400 Saulnot · France



info@cutlasersystem.com  
www.cutlasersystem.fr